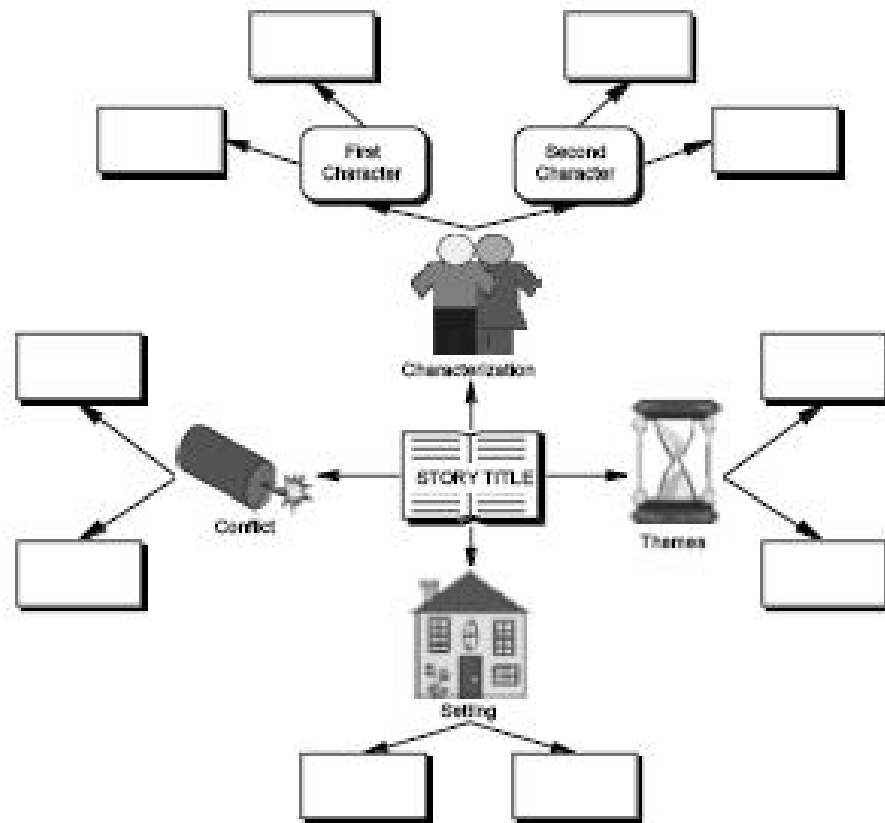


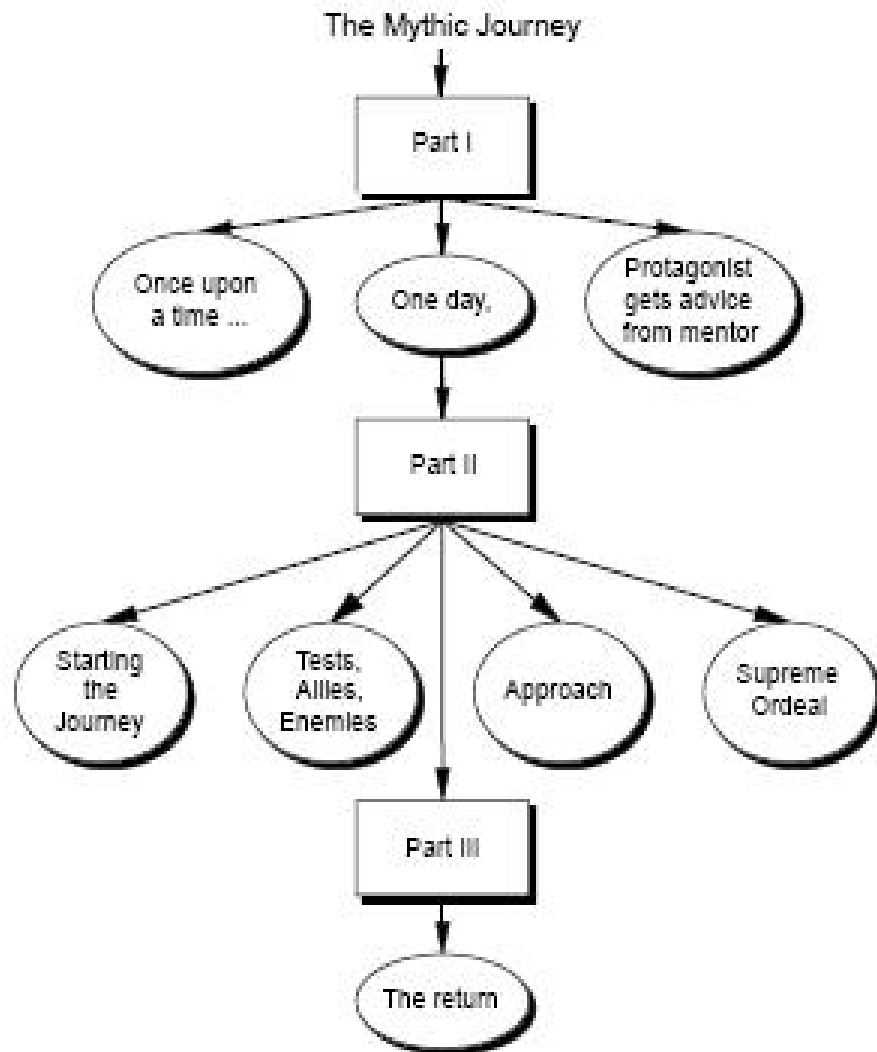
Language Arts-Literary Web



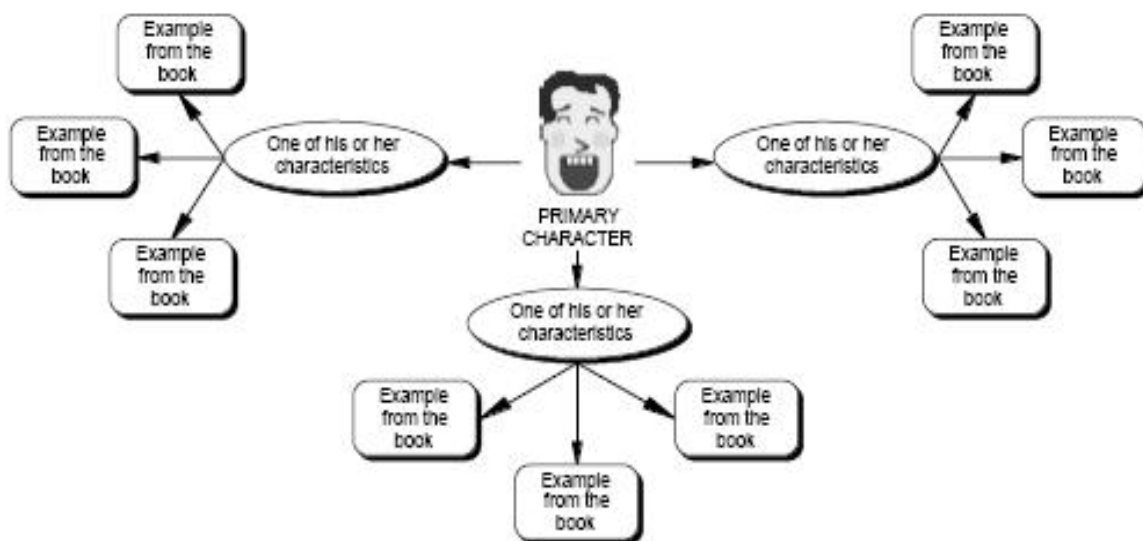
How to use this template

- 1 Enter the title of any work of fiction in the symbol labeled "STORY TITLE."
- 2 Enter appropriate information about characterization, themes and so forth into the subsymbols.
- 3 Add symbols to further explain your ideas as necessary using the Create tools.

Language Arts-Mythic Journey



Language Arts-Character



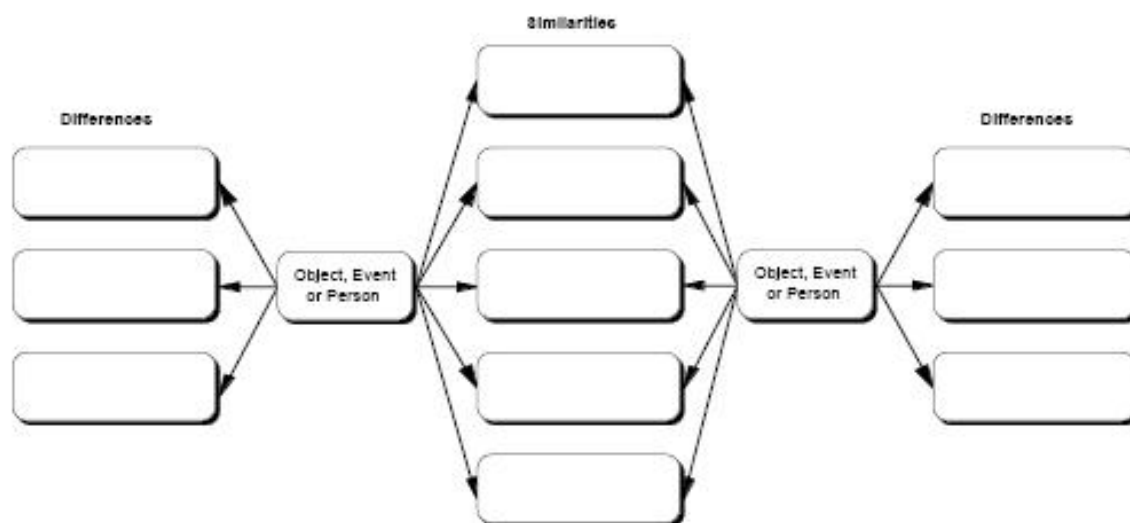
How to use this template

- 1 Enter character to be analyzed in the symbol labeled "PRIMARY CHARACTER."
- 2 Enter one characteristic in each of the subsymbols.
- 3 Enter supporting examples in each of the subsymbols.
- 4 Add characteristic or example symbols as necessary using the Create or RapidFire tools.

Benefits of using the Character Web template

Character webs represent one of the ways in which visual learning can support comprehension in the reading process. Using character webs helps students justify their impressions of literary characters by citing specific evidence in a given text. There is also evidence that such an approach can enhance students' fiction writing, as they use specific detail to create richer characters. You may wish to use an amended version of this web in the social studies curriculum for an analysis of historical figures. Simply apply examples from the personage's life or writings.

Language Arts-Comparison



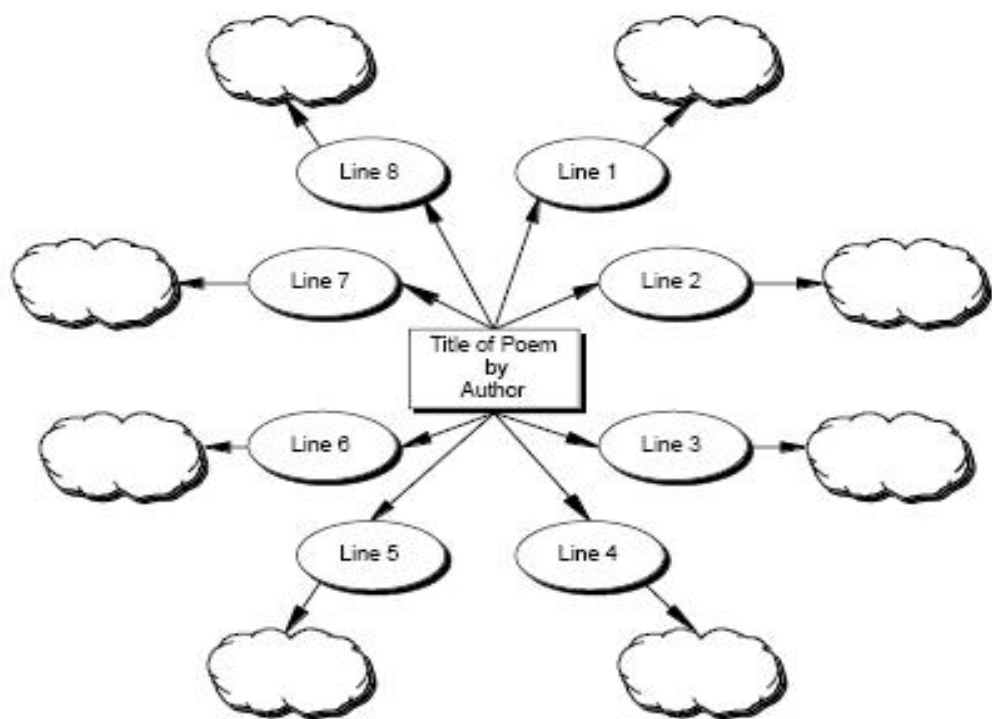
How to use this template

- 1 Enter items for comparison in the symbols labeled "Object, Event or Person."
- 2 Enter similarities in the central subsymbols.
- 3 Enter differences in the symbols to the left and right.
- 4 Add similarities or differences symbols as necessary using the Create tools.

Benefits of using the Comparison Web template

One of the most basic and powerful forms of analysis in any discipline is comparison. This template can be used for simple comparisons: hero/villain, vertebrate/invertebrate, democracy/dictatorship and so forth. However, the template also supports much greater sophistication and complexity, depending on the subject matter and the user. For example, students might compare the subtle similarities and differences between life cycles, literary styles, subcultures and so forth.

Language Arts-Poetic Analysis



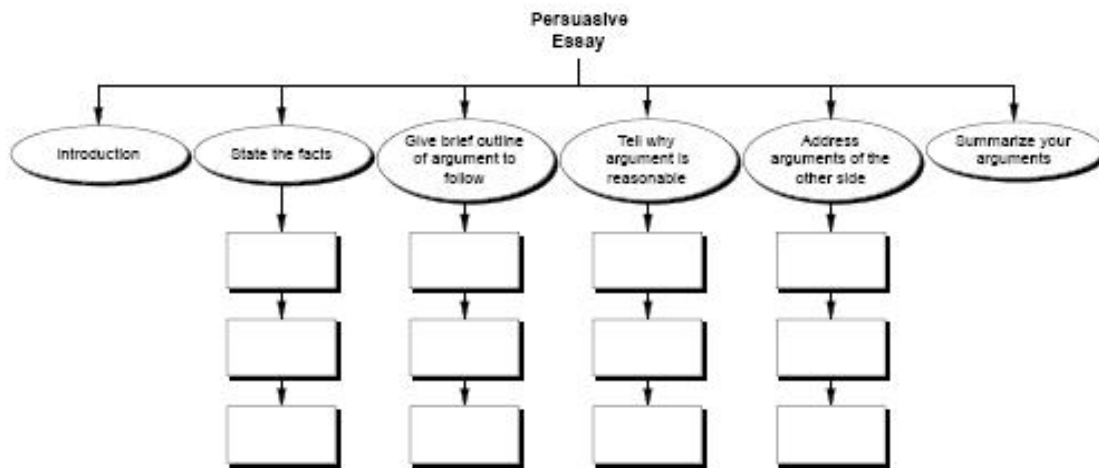
How to use this template

- 1 Enter lines from the selected poem in the appropriate symbol.
- 2 Add symbols as necessary using the Create tools.
- 3 Record interpretations, comments, questions, etc. in the cloud symbols associated with each line.
- 4 Add subsymbols as necessary using the Create tools or RapidFire feature.

Benefits of using the Poetic Analysis template

This template allows students to analyze or respond to a poem line by line, making a sometimes daunting task more manageable. By switching to Outline view, students will be able to translate their diagram to the beginnings of an analytic essay.

Language Arts-Persuasive



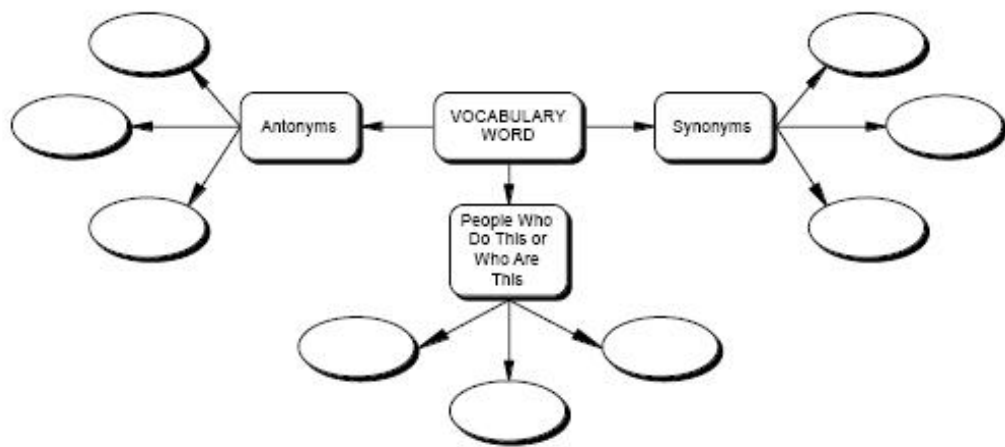
How to use this template

- 1 Using information from brainstorm or first draft, enter information into the appropriate subsymbols.
- 2 Add subsymbols as necessary using Create tools.
- 3 Check the Outline view to make sure that each area contains sufficient information.
- 4 For writing help, see Notes text associated with each area of the essay.

Benefits of using the Persuasive Essay template

This template will support students as they organize their ideas, and help them to form logical arguments. The template will also remind them of their audience and purpose as they construct their essay.

Language Arts-Vocabulary



How to use this template

- 1 Enter selected word in the symbol labeled "VOCABULARY WORD."
- 2 Enter appropriate text in the subsymbols or click on Synonyms, Antonyms, etc. As you brainstorm, add symbols as necessary using the Create or RapidFire tools.

Benefits of using the Vocabulary Web template

The Vocabulary Web allows students to examine and analyze a verbal concept visually. After filling in the template, students can see the entire information about their word at a glance, as well as isolate specific details, such as antonyms, for memorization. Other approaches to vocabulary enhancement may be added as well, such as uses of the word in context, its etymology, variant definition and so forth.